

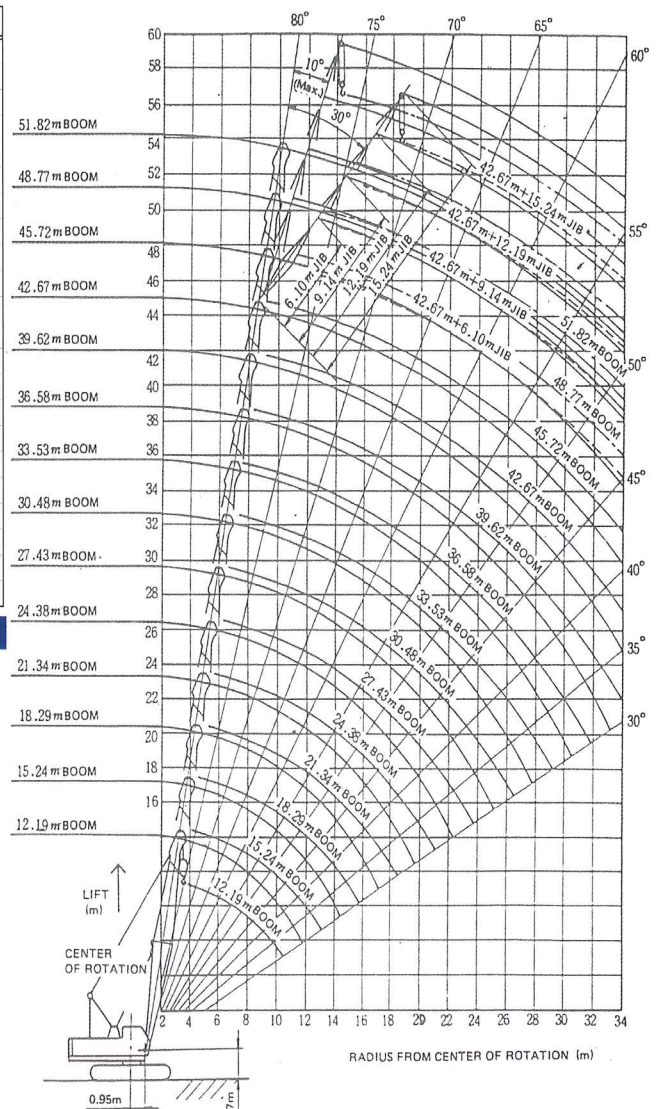
# 55 TON CRAWLER CRANE



## LOAD CHART

Boom Length (M)	12.19	15.24	18.29	21.34	24.38	27.43	30.48	33.53	36.58	39.62	42.67	45.72	48.77	51.82
3.7	55.0													
4.0	50.7	50.6												
4.5	42.0	41.9	41.9											
5.0	35.2	35.1	35.1	35.0										
5.5	30.3	30.2	30.1	30.1	30.0									
6.0	26.5	26.4	26.4	26.3	26.2	26.1								
7.0	21.2	21.1	21.0	20.9	20.8	20.8	20.7	20.6						
8.0	17.6	17.5	17.4	17.3	17.3	17.2	17.1	17.0	17.0	16.7				
9.0	15.0	14.9	14.8	14.7	14.6	14.5	14.5	14.4	14.3	14.3	14.2			
10.0	13.1	12.9	12.8	12.7	12.7	12.6	12.5	12.4	12.4	12.3	12.2	12.1	12.1	
12.0	10.7	10.2	10.1	10.0	9.9	9.8	9.7	9.6	9.6	9.5	9.4	9.3	9.3	9.2
14.0		8.3	8.2	8.1	8.0	7.9	7.8	7.7	7.7	7.6	7.5	7.4	7.4	7.3
16.0			6.9	6.8	6.7	6.6	6.5	6.4	6.3	6.2	6.2	6.1	6.1	5.9
18.0				5.8	5.7	5.6	5.5	5.4	5.3	5.2	5.1	5.1	5.0	4.9
20.0					5.2	4.9	4.8	4.7	4.6	4.5	4.4	4.3	4.2	4.1
22.0						4.3	4.2	4.1	4.0	3.9	3.8	3.7	3.6	3.5
24.0							3.7	3.6	3.5	3.4	3.3	3.2	3.1	3.0
26.0								3.2	3.0	3.0	2.9	2.8	2.7	2.5
28.0									2.7	2.6	2.5	2.4	2.3	2.2
30.0										2.4	2.3	2.2	2.1	2.0
32.0											2.0	1.9	1.8	1.7
34.0												1.7	1.6	1.5

## WORKING RANGES



## DIMENSION

