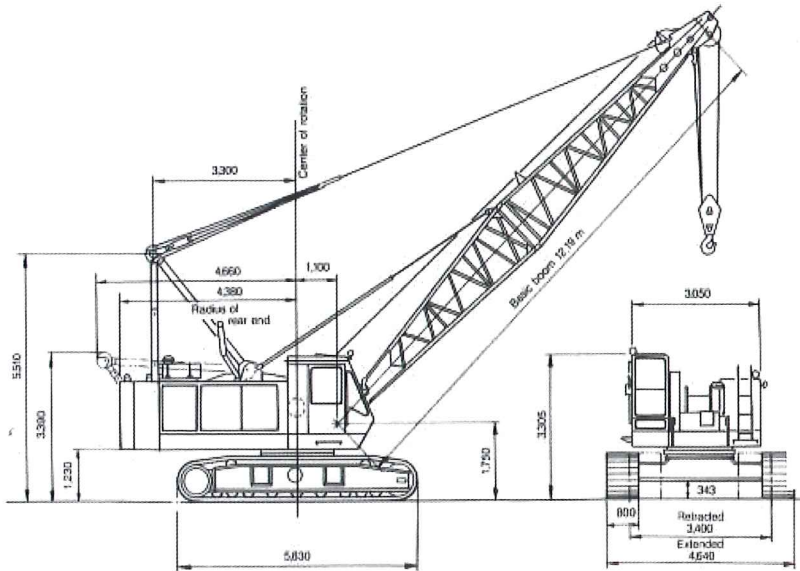


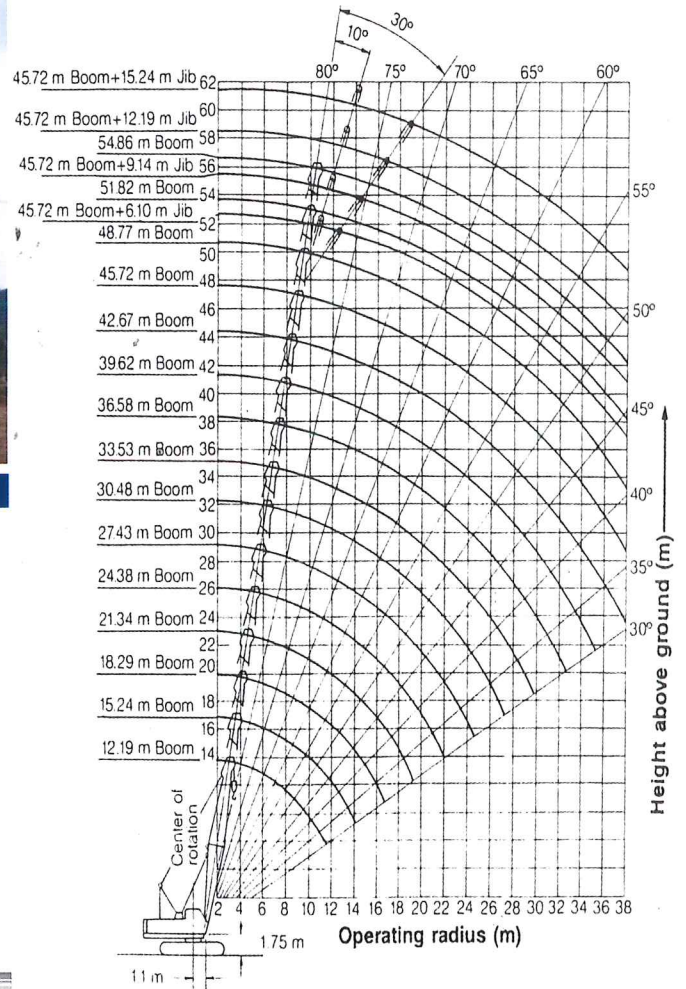
65 Ton Crawler Crane



DIMENSION



WORKING RANGES



LOAD CHART

Boom Length (M)	12.19	15.24	18.29	21.34	24.38	27.43	30.48	33.53	36.58	39.62	42.67	45.72	48.77	51.82	54.86
4.0	65.00	63.10													
4.5	53.70	53.60	53.20												
5.0	44.80	44.70	44.60	43.9											
5.5	38.40	38.20	38.10	38.00	37.20										
6.0	33.50	33.40	33.30	33.20	33.10	32.20									
7.0	26.70	26.60	26.40	26.40	26.30	26.20	26.10								
8.0	22.10	22.00	21.80	21.70	21.70	21.60	21.50	21.50	21.40						
9.0	18.90	18.70	18.60	18.50	18.40	18.30	18.20	18.20	18.10	18.00	17.90				
10.0	16.40	16.20	16.10	16.00	15.90	15.80	15.70	15.70	15.60	15.50	15.40	15.30	15.20		
12.0	13.30	12.80	12.60	12.50	12.40	12.30	12.20	12.20	12.10	12.00	11.90	11.80	11.70	11.60	
14.0			10.30	10.20	10.10	10.00	9.90	9.90	9.80	9.60	9.50	9.50	9.30	9.20	9.20
16.0			8.70	8.60	8.40	8.30	8.20	8.20	8.10	8.00	7.80	7.80	7.70	7.60	7.50
18.0				7.30	7.20	7.10	6.90	6.90	6.80	6.70	6.60	6.50	6.40	6.30	6.20
20.0				6.60	6.20	6.10	6.00	6.00	5.90	5.70	5.60	5.60	5.40	5.30	5.20
22.0					5.50	5.40	5.20	5.20	5.10	5.00	4.80	4.70	4.60	4.50	4.40
24.0						4.80	4.60	4.50	4.40	4.30	4.20	4.10	4.00	3.90	3.80
26.0							4.10	4.00	3.90	3.80	3.70	3.60	3.40	3.30	3.20
28.0								3.60	3.50	3.40	3.20	3.10	3.00	2.90	2.80
30.0								3.20	3.10	3.00	2.80	2.70	2.60	2.50	2.40
32.0									2.80	2.70	2.50	2.40	2.30	2.20	2.00
34.0										2.40	2.20	2.10	2.00	1.80	1.70
36.0											2.00	1.90	1.70	1.50	1.40
38.0												1.70	1.60	1.40	1.10