



PERTAMA CRANE & ENGINEERING SDN BHD

Hydraulic Crawler Crane

CKS

900

Model : CKS900

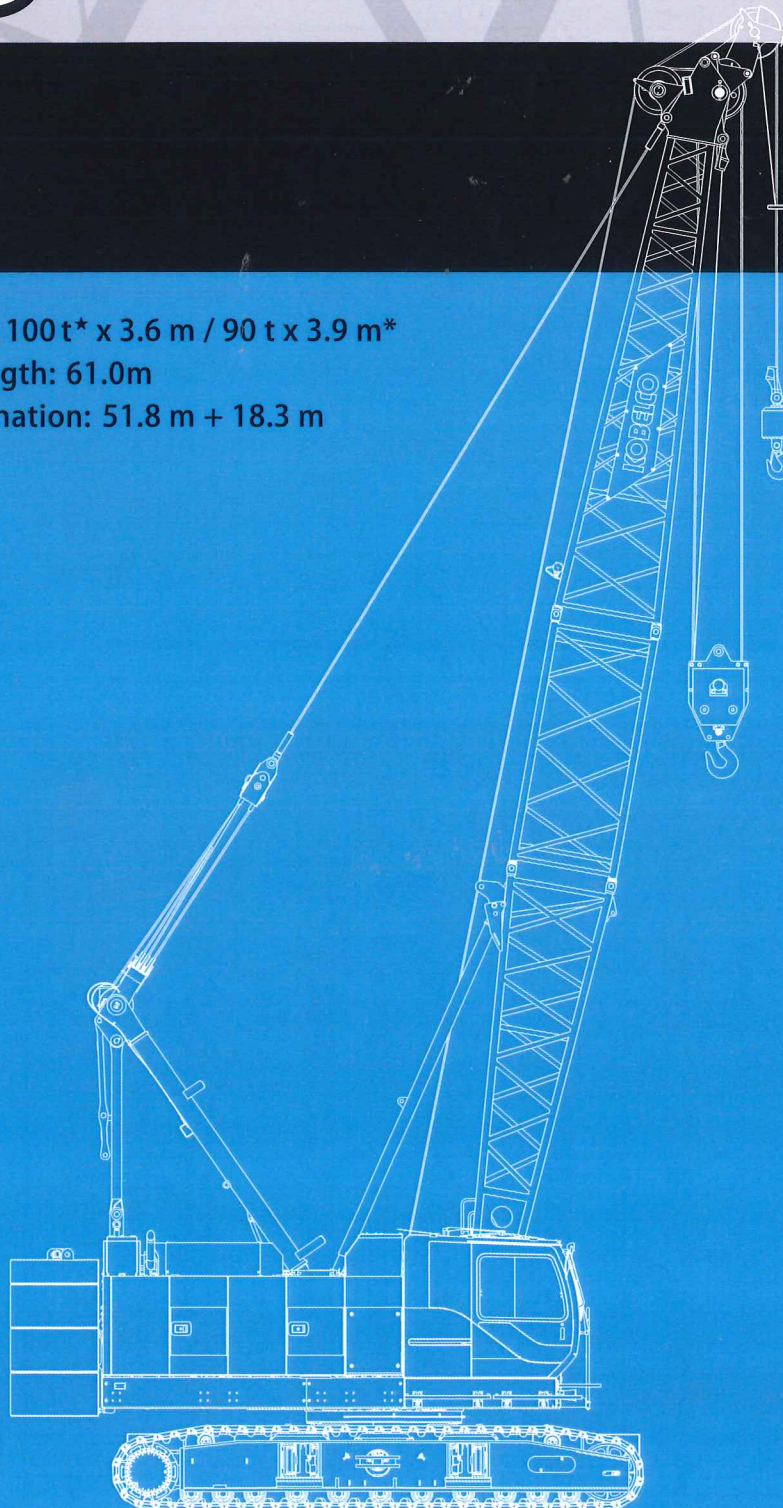
Max. Lifting Capacity: 100 t* x 3.6 m / 90 t x 3.9 m*

Max. Crane Boom Length: 61.0m

Max. Fixed Jib Combination: 51.8 m + 18.3 m

* The value are theoretical result.

* Auxiliary sheave is necessary.



KOBELCO

LIFTING CAPACITIES



Crane Boom Lifting Capacities

Counterweight: 31.9 t
Carbody Weight: 14.4 t

Unit: metric ton

Working radius (m)	Boom length (m)	12.2	15.2	18.3	21.3	24.4	27.4	30.5	33.5	36.6	39.6	Boom length (m)	Working radius (m)
	3.6											3.6	
3.6	100.0*												3.6
3.9	90.0	89.9	89.7										3.9
4.0	89.0	88.9	88.7	4.3m/68.4									4.0
4.5	79.6	79.5	79.4	68.4	4.7m/68.4								4.5
5.0	72.1	71.9	71.8	68.4	67.6	5.1m/57.0							5.0
5.5	65.8	65.7	65.5	63.6	60.6	57.0	5.6m/54.0						5.5
6.0	60.5	60.3	59.9	57.5	54.9	52.7	50.5	45.6	6.4m/41.9	6.8m/34.2			6.0
7.0	48.6	48.5	48.4	48.1	46.2	44.5	42.9	41.5	40.0	34.2			7.0
8.0	39.9	39.8	39.7	39.9	39.8	38.5	37.2	36.1	35.0	33.9			8.0
9.0	33.8	33.7	33.6	33.8	33.6	33.6	32.8	31.9	31.0	30.1			9.0
10.0	29.3	29.2	29.1	29.2	29.1	29.0	28.9	28.5	27.7	27.0			10.0
12.0	11.8m/22.9	22.9	22.8	22.9	22.8	22.7	22.6	22.6	22.5	22.3			12.0
14.0		18.8	18.6	18.8	18.6	18.5	18.4	18.4	18.3	18.3			14.0
16.0		14.4m/18.1	15.7	15.8	15.7	15.6	15.5	15.4	15.3	15.3			16.0
18.0			17.0m/14.5	13.7	13.5	13.4	13.3	13.2	13.1	13.1			18.0
20.0				19.6m/12.2	11.8	11.7	11.6	11.5	11.4	11.4			20.0
22.0					10.5	10.4	10.2	10.2	10.0	10.0			22.0
24.0					22.3m/10.3	9.3	9.1	9.1	8.9	8.9			24.0
26.0						24.9m/8.8	8.2	8.2	8.0	8.0			26.0
28.0							27.6m/7.6	7.4	7.2	7.2			28.0
30.0								6.8	6.6	6.5			30.0
32.0								30.2m/6.7	6.0	6.0			32.0
34.0									32.9m/5.8	5.5			34.0
36.0										35.5m/5.1			36.0
Reeves	8	8	8	6	6	5	5	4	4	4	4	Reeves	Reeves

Working radius (m)	Boom length (m)	42.7	45.7	48.8	51.8	54.9	57.9	61.0	Boom length (m)	Working radius (m)
	7.0								7.0	
7.0	7.3m/31.9	7.7m/28.0								7.0
8.0	31.4	27.8	8.1m/22.1	8.5m/19.2						8.0
9.0	29.2	26.2	20.8	18.6	16.2	9.4m/13.9	9.8m/11.8			9.0
10.0	26.2	24.5	19.5	17.4	15.2	13.4	11.7			10.0
12.0	21.7	21.2	17.3	15.4	13.3	11.7	10.2			12.0
14.0	18.1	18.0	15.5	13.8	11.9	10.4	9.0			14.0
16.0	15.2	15.1	14.1	12.4	10.7	9.3	8.0			16.0
18.0	12.9	12.9	12.8	11.4	9.7	8.4	7.2			18.0
20.0	11.2	11.2	11.1	10.4	8.9	7.6	6.5			20.0
22.0	9.9	9.8	9.8	9.6	8.1	7.0	5.9			22.0
24.0	8.7	8.7	8.6	8.5	7.5	6.4	5.4			24.0
26.0	7.8	7.7	7.7	7.6	6.9	5.9	4.9			26.0
28.0	7.0	7.0	6.9	6.8	6.4	5.4	4.5			28.0
30.0	6.4	6.3	6.3	6.1	6.0	5.0	4.1			30.0
32.0	5.8	5.7	5.7	5.6	5.4	4.6	3.8			32.0
34.0	5.3	5.2	5.1	5.0	4.9	4.3	3.4			34.0
36.0	4.8	4.8	4.7	4.6	4.4	4.0	3.2			36.0
38.0	4.4	4.4	4.2	4.1	4.0	3.6	2.9			38.0
40.0	38.1m/4.4	4.0	3.9	3.8	3.6	3.3	2.6			40.0
44.0		40.8m/3.9	43.4m/3.3	3.1	3.0	2.8	2.1			44.0
48.0				46.1m/2.8	2.5	2.2	1.7			48.0
52.0					48.7m/2.4	51.4m/1.8				52.0
Reeves	4	4	2	2	2	2	2	2	Reeves	Reeves

Note:

Ratings according to EN13000.

Ratings shown in are determined by the strength of the boom or other structural components.

Lifting capacities may vary depending on hook used or with/without auxiliary sheave.

Please refer rated chart in operator's cabin.

* The value are theoretical result.