





# Hydraulic Crawler Crane

## FUWA

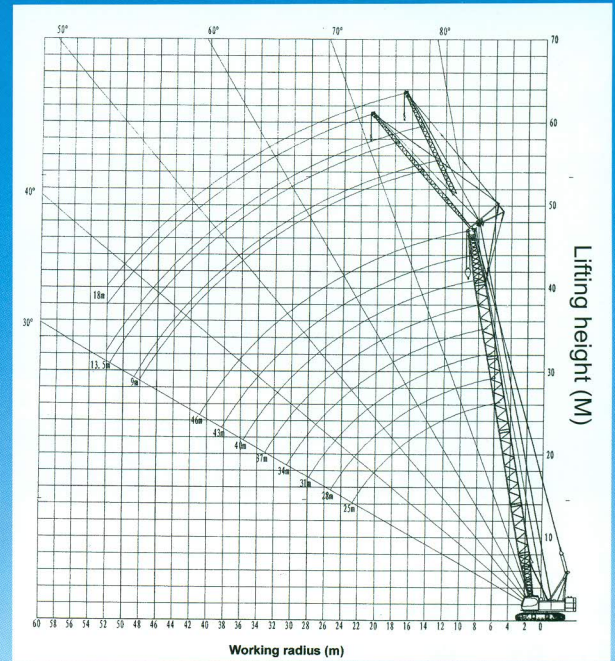
# QUY65

**Max. Lifting Capacity: 65 t x 3.7 m**  
**Max. Crane Boom Length : 58 m**

- The value are theoretical result
- Auxiliary sheave is necessary

### LIFTING CAPACITIES

### Main Boom with Fly Jib



Working Radius (M)	31.0			34.0						37.0						40.0								
	9.0		13.5		18		9.0		13.5		18		9.0		13.5		18		9.0		13.5		18	
	Angle	15°	30°	15°	30°	15°	30°	15°	30°	15°	30°	15°	30°	15°	30°	15°	30°	15°	30°	15°	30°	15°	30°	
12.0	7.0						7.0						7.0						7.0					
14.0	7.0	7.0	7.0				7.0	7.0	7.0				7.0	7.0	7.0				7.0	7.0	7.0			
16.0	7.0	7.0	7.0	7.0	4.5		6.8	7.0	6.8	7.0	4.6		6.6	6.9	6.7		4.7		6.5	6.7	6.5		4.7	
18.0	6.0	6.1	6.0	6.2	4.3		5.8	6.0	5.8	6.1	4.4		5.6	5.8	5.7	5.9	4.4		5.5	5.7	5.5	5.8	4.5	
20.0	5.2	5.3	5.2	5.4	4.1	3.5	5.0	5.2	5.0	5.2	4.2	3.6	4.9	5.0	4.9	5.1	4.3	3.6	4.7	4.9	4.7	5.0	4.3	3.6
22.0	4.5	4.7	4.6	4.7	3.9	3.4	4.4	4.5	4.4	4.6	4.0	3.5	4.2	4.4	4.3	4.5	4.1	3.5	4.1	4.2	4.1	4.3	4.1	3.5
24.0	4.0	4.1	4.0	4.2	3.8	3.3	3.8	4.0	3.9	4.0	3.9	3.4	3.7	3.8	3.7	3.9	3.7	3.4	3.6	3.7	3.6	3.8	3.6	3.5
26.0	3.6	3.7	3.6	3.7	3.6	3.3	3.4	3.5	3.4	3.6	3.4	3.3	3.3	3.4	3.3	3.5	3.3	3.3	3.1	3.3	3.2	3.3	3.2	3.4
28.0	3.2	3.3	3.2	3.3	3.2	3.2	3.0	3.1	3.1	3.2	3.1	3.2	2.9	3.0	2.9	3.1	2.9	3.1	2.8	2.9	2.8	3.0	2.8	3.0
30.0	2.9	2.9	2.9	3.0	2.9	3.1	2.7	2.8	2.7	2.9	2.8	2.9	2.6	2.7	2.6	2.8	2.6	2.8	2.5	2.6	2.5	2.6	2.5	2.7
32.0	2.6	2.7	2.6	2.7	2.6	2.8	2.4	2.5	2.5	2.6	2.5	2.6	2.3	2.4	2.4	2.5	2.4	2.5	2.2	2.3	2.2	2.4	2.2	2.4
34.0	2.4	2.4	2.4	2.5	2.4	2.5	2.2	2.2	2.2	2.3	2.2	2.4	2.1	2.1	2.1	2.2	2.1	2.3	2.0	2.0	2.0	2.1	2.0	2.2
36.0	2.1	2.2	2.2	2.2	2.2	2.3	2.0	2.0	2.0	2.1	2.0	2.1	1.9	1.9	1.9	2.0	1.9	2.0	1.8	1.8	1.8	1.9	1.8	1.9
38.0			2.0	2.0	2.0	2.1	1.8	1.8	1.8	1.9	1.8	1.9	1.7	1.7	1.7	1.8	1.7	1.8	1.6	1.6	1.6	1.7	1.6	1.7
40.0			1.8	1.9	1.8	1.9			1.7	1.7	1.7	1.8	1.5	1.6	1.6	1.6	1.6	1.7	1.4	1.4	1.4	1.5	1.4	1.6
42.0					1.7	1.7			1.5	1.6	1.5	1.6	1.4	1.4	1.4	1.5	1.4	1.5	1.3	1.3	1.3	1.4	1.3	1.4
44.0					1.5	1.6			1.4	1.4	1.5				1.3	1.3	1.3	1.4	1.1	1.2	1.2	1.2	1.2	1.3
46.0					1.5						1.3	1.3				1.1	1.2	1.2	1.2			1.0	1.1	1.1
48.0											1.2	1.2						1.1	1.1			0.9	1.0	1.0
50.0																		1.0	1.0					0.9