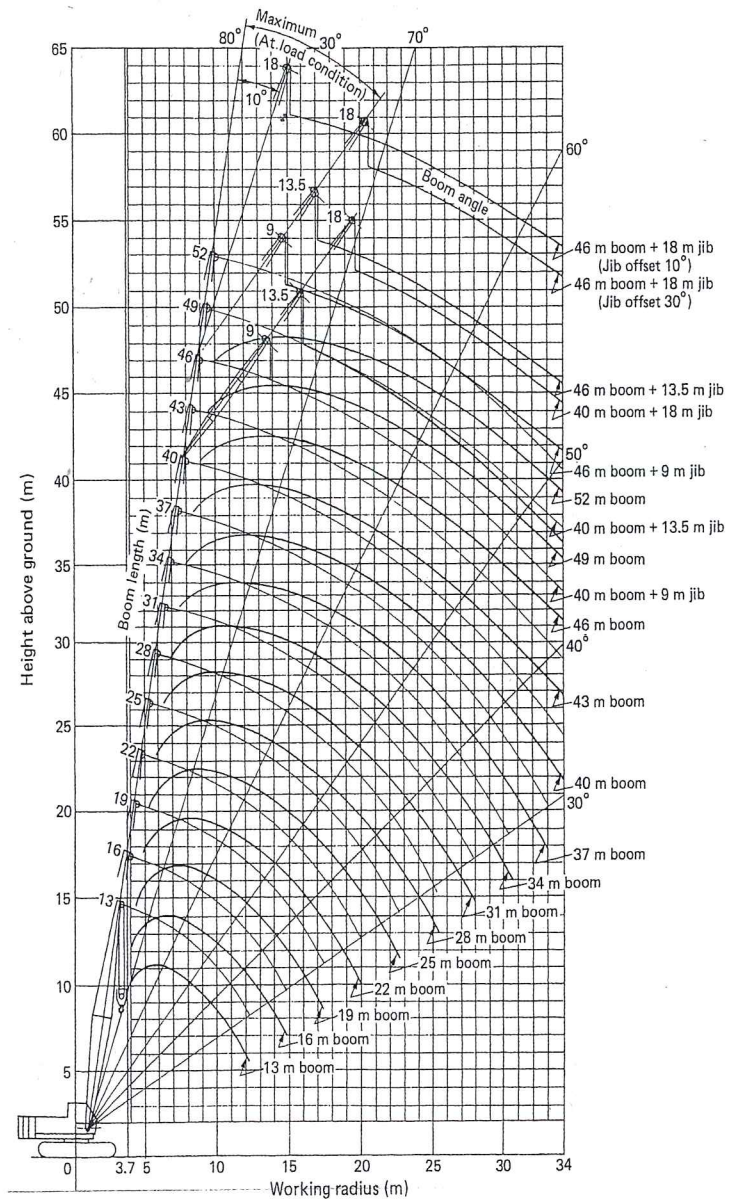


60 Ton Crawler Crane



WORKING RANGES



LOAD CHART

Unit: 1000 kg

Working radius (m)	Boom length (m)														
	13	16	19	22	25	28	31	34	37	40	43	46	49	52	
3.7	60.00														
4.0	55.45	55.30													
4.5	49.15	49.00	48.80												
5.0	44.10	43.95	43.80	5.1mx 42.80											
5.5	40.00	39.80	39.65	39.55	5.6mx 38.65										
6.0	34.85	34.75	34.65	34.60	34.50	6.1mx 33.55									
6.5	30.85	30.75	30.60	30.55	30.50	30.40	6.6mx 29.70								
7.0	27.85	27.50	27.40	27.35	27.25	27.15	7.1mx 26.45	7.7mx 23.40							
8.0	22.80	22.70	22.55	22.50	22.40	22.30	22.25	22.20	22.10	8.2mx 21.25	8.7mx 19.40				
9.0	19.35	19.25	19.10	19.05	18.95	18.85	18.80	18.70	18.60	18.55	18.45	9.2mx 17.75	9.8mx 16.10		
10.0	16.80	16.65	16.50	16.45	16.35	16.25	16.20	16.10	16.00	15.90	15.85	15.75	15.65	10.3mx 14.90	
12.0	13.20	13.05	12.90	12.80	12.70	12.60	12.55	12.45	12.35	12.25	12.20	12.10	12.00	11.85	
14.0	12.3mx 12.75	10.65	10.50	10.40	10.25	10.15	10.10	10.00	9.90	9.80	9.75	9.65	9.55	9.40	
16.0	14.8mx 9.80	8.75	8.70	8.55	8.45	8.35	8.25	8.15	8.05	8.00	7.90	7.80	7.65		
18.0		17.5mx 7.80	7.40	7.25	7.15	7.05	6.95	6.85	6.75	6.70	6.60	6.50	6.35		
20.0			6.40	6.25	6.15	6.05	5.95	5.85	5.75	5.65	5.55	5.45	5.35		
22.0				5.45	5.35	5.25	5.15	5.05	4.95	4.85	4.75	4.65	4.50		
24.0					22.7mx 5.25	4.70	4.60	4.50	4.40	4.30	4.20	4.10	4.00	3.85	
26.0						25.3mx 4.35	4.10	3.95	3.85	3.75	3.65	3.55	3.40	3.20	
28.0							27.9mx 3.65	3.50	3.40	3.30	3.15	3.00	2.90	2.70	
30.0								3.10	3.00	2.85	2.70	2.55	2.45	2.25	
32.0									30.5mx 3.05	2.60	2.45	2.30	2.20	2.05	1.85
34.0										33.1mx 2.45	2.15	2.00	1.85	1.70	1.55

DIMENSION

