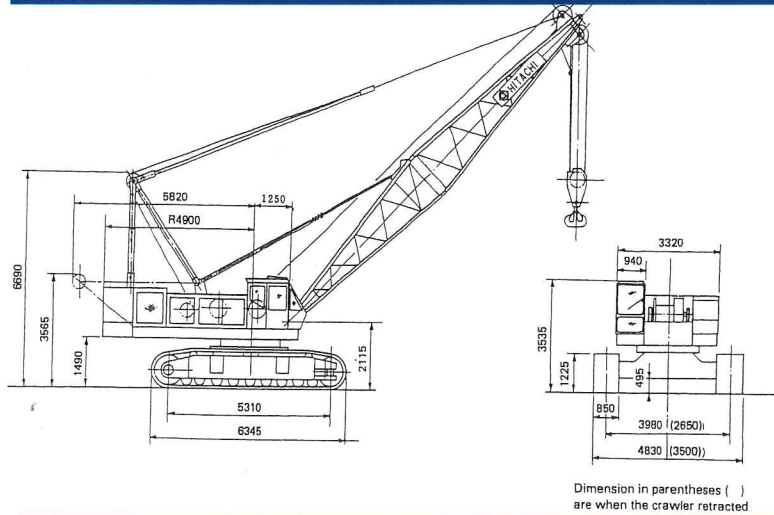


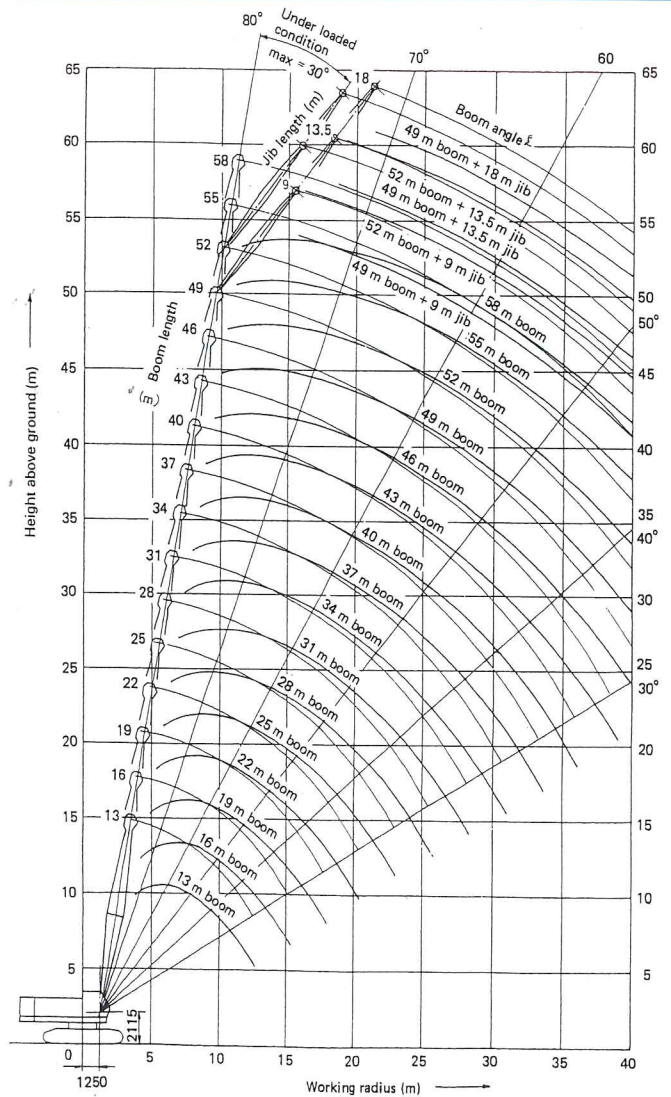
80 Ton Crawler Crane



DIMENSION



WORKING RANGES



LOAD CHART

Working radius (m)	Boom length (m)																
	13	16	19	22	25	28	31	34	37	40	43	46	49	52	55	58	
3.9	80.00																
4.0	80.00	4.4mx 72.70															
4.5	71.10	70.95	4.9mx 60.30														
5.0	59.00	58.80	58.70	5.4mx 51.25													
5.5	50.35	50.15	50.05	50.00	5.9mx 44.10												
6.0	43.85	43.65	43.55	43.45	43.35												
6.5	38.80	38.60	38.50	38.40	38.30	38.25											
7.0	34.75	34.60	34.45	34.35	34.25	34.20	34.10	7.5mx 30.65									
8.0	28.70	28.50	28.35	28.30	28.20	28.15	28.00	27.85	27.70	8.5mx 25.20							
9.0	24.40	24.20	24.05	23.95	23.85	23.80	23.70	23.50	23.50	23.35	9.1mx 22.95	9.6mx 21.05					
10.0	21.20	20.95	20.80	20.70	20.60	20.55	20.40	20.25	20.20	20.10	19.95	19.80	10.1mx 19.50	10.6mx 18.00	11.1mx 16.65	11.7mx 15.45	
12.0	16.65	16.45	16.25	16.20	16.05	16.00	15.85	15.70	15.65	15.50	15.35	15.25	15.20	15.05	14.95	14.80	
14.0	12.7mx 15.55	13.45	13.25	13.15	13.00	12.95	12.85	12.65	12.60	12.50	12.30	12.20	12.15	12.00	11.90	11.75	
16.0		15.3mx 12.00	11.10	11.00	10.85	10.80	10.65	10.50	10.45	10.30	10.15	10.00	9.95	9.85	9.70	9.55	
18.0			17.9mx 9.55	9.40	9.25	9.15	9.05	8.90	8.80	8.70	8.50	8.40	8.35	8.20	8.10	7.95	
20.0				8.20	8.00	7.90	7.80	7.60	7.55	7.40	7.25	7.10	7.05	6.95	6.80	6.65	
22.0					20.5mx 7.95	7.05	6.90	6.80	6.60	6.55	6.40	6.25	6.10	6.05	5.90	5.65	
24.0						23.1mx 6.60	6.10	6.00	5.80	5.75	5.60	5.40	5.30	5.20	5.10	4.95	4.80
26.0							25.7mx 5.55	5.30	5.15	5.05	4.90	4.75	4.60	4.55	4.40	4.25	4.10
28.0								4.75	4.55	4.45	4.35	4.15	4.05	3.95	3.80	3.65	3.45
30.0								28.3mx 4.70	4.10	4.00	3.85	3.65	3.50	3.40	3.25	3.10	2.90
32.0									30.9mx 3.90	3.55	3.40	3.20	3.05	2.95	2.75	2.60	2.40
34.0										33.5mx 3.30	3.05	2.80	2.65	2.50	2.35	2.20	2.00
36.0											2.70	2.45	2.30	2.15	2.00	1.80	1.60
38.0											36.1mx 2.65	2.15	1.95	1.85	1.65	1.50	1.30
40.0												38.7mx 2.05	1.70	1.55	1.35	1.20	